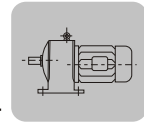


# ● YTC系列齿轮减速电机



## 1. YTC系列齿轮减速电动机

YTC系列齿轮减速电动机是新一代产品，其传动效率比电磁调速电机及其它变速电机高得多，与国内同类产品相比，具有高效、节能、体积小、重量轻、规格多、结构先进、选用方便、性能优良等特点，适用于直接驱动各种低速机械，在轻工、制茶、制糖、制药、造纸、冶金、化工、除尘、纺织、印染、橡胶、食品、粮食加工、建材机械、渔业机械、电子仪器、起重运输等行业均可采用。可以替代国内JTC和JTC-A系列老产品，也可替代部分国外进口的产品。

## 2. 工作条件

环境温度：随季节而变化，但不超过40℃

海拔：不超过1000m

湿度：最湿月月平均最高相对湿度为90%

外壳防护等级：IP44、IP54

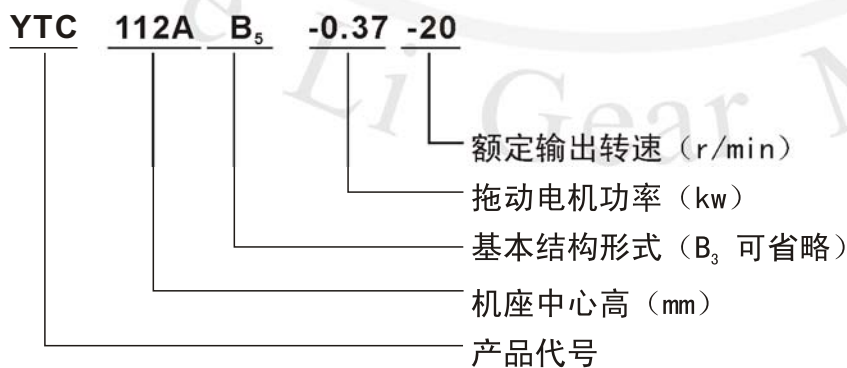
工作制：连续（S<sub>1</sub>）

绝缘等级：B级、F级

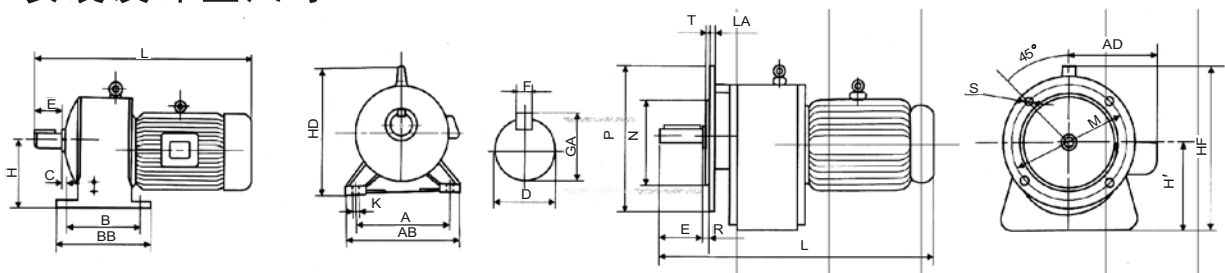
驱动方式：采用弹性联轴器，正齿轮或链驱动负载。

电源：三相380V，50HZ 单相200V。

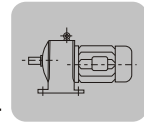
## 3. 标记示例



## 4. 安装及外型尺寸：



# ● YTC系列齿轮减速电机



型号	安装尺寸(mm)														最大外型尺寸 (mm)								
	A	B	C	D	E	F	GA	H	K	M	N	P	R	4-∅S	T	AB	BB	HD	L	AD	H'	HF	LA
YTC-112	160	124	26	24	50	8	27	112	11	165	130	200	0	12	3.5	195	160	175	415	155	112	180	12
YTC-112A	160	124	26	24	50	8	27	112	11	165	130	200	0	12	3.5	195	160	180	440	155	112	202	12
YTC-170	216	180	22	45	110	14	48.5	170	16	215	180	250	0	15	4	265	225	310	550	160	170	296	14
YTC-205	270	224	-1	55	110	16	59	205	20	265	230	300	0	15	4	360	290	375	620	195	205	334	16
YTC-250	300	284	-3	70	140	20	74.5	250	25	300	250	350	0	19	5	410	360	450	820	215	250	414	18
YTC-280	450	280	32	85	170	22	90	280	22	/	/	/	/	/	/	520	340	522	1190	260	/	/	/

## 5. 技术数据

型号	拖动电机功率	额定转速	参考重量	包装箱参考尺寸
YTC112	0.12	23, 25, 27, 29, 31, 33, 36, 38, 42, 46, 68	19	500X320X260
	0.18	23, 25, 27, 29, 31, 33, 36, 38, 42, 46, 68	19	
	0.25	23, 25, 27, 29, 31, 33, 36, 38, 42, 46, 50, 54, 58, 62, 67, 71, 78, 84, 93, 100, 108, 116, 124, 135	20	
	0.37	31, 46, 50, 54, 58, 62, 64, 67, 71, 78, 86, 93, 100, 108, 116, 124, 135	28	
	0.55	45, 50, 54, 58, 62, 67, 71, 72, 78, 86, 93, 100, 108, 116, 124, 135	30	
	0.75	46, 62, 67, 71, 72, 78, 86, 93, 100, 108, 116, 123, 135	30	
YTC112A	0.12	10, 11, 12, 13, 14, 15, 16, 17, 18, 20, 21	20	540X320X260
	0.18	10, 11, 12, 13, 14, 15, 16, 17, 18, 20, 21	30	
	0.25	14, 15, 16, 17, 18, 20, 21, 24, 30, 40	30	
	0.37	20, 22, 24, 25, 27, 30, 32, 35, 37, 44	30	
	0.55	20, 24, 25, 30, 32, 35, 37, 40, 44, 50	30	
	0.75	24, 25, 30, 40, 43, 47, 50, 54, 58	30	
YTC170	0.75	30, 31, 32, 33, 35, 37, 38, 41, 43, 46, 51, 56, 60, 64, 67, 71, 76, 80, 82, 92, 99, 108, 150	52	630X360X400
	1.1	30, 31, 32, 33, 35, 37, 38, 40, 41, 43, 46, 47, 50, 51, 53, 54, 56, 58	55	
		60, 62, 64, 66, 67, 71, 76, 79, 80, 81, 82, 86, 88, 91, 92, 93, 97, 99, 102, 104		
		108, 112, 117, 120, 121, 128, 137, 104, 147, 150, 153, 158, 167, 179, 193, 203, 208, 228		
	1.5	47, 50, 53, 54, 56, 58, 60, 62, 64, 66, 67, 71, 76, 79, 81, 86, 88, 91	57	
		93, 97, 102, 104, 108, 112, 117, 120, 121, 127, 128, 137, 140, 147, 153, 158 167, 168, 179, 193, 208, 223, 228		
YTC205	1.5	31, 33, 36, 37, 38, 39, 44	97	690X440X490
	2.2	31, 33, 36, 37, 38, 39, 41, 44, 47, 49, 50, 54, 56, 58, 60, 64, 67, 74, 76	105	
		80, 90, 96, 100, 102, 114, 121, 136, 150		
	3	47, 50, 54, 56, 58, 60, 62, 67, 72, 74, 77, 96, 102, 114, 121, 136, 150	100	
4	78, 84, 91, 98, 105, 111, 120, 129, 138, 149, 160, 172	110		
YTC250	3	31, 32, 33, 35, 37, 38, 40	178	900X500X550
	4	30, 31, 32, 33, 35, 38, 40, 47, 48, 50, 52	190	
		57, 60, 62, 69, 75		
	5.5	31, 33, 38, 40, 47, 48, 50, 52, 55, 60, 62, 64, 69, 73, 75, 79, 110, 114, 120	190	
	7.5	47, 50, 57, 60, 64, 69, 73, 79, 84, 91, 93, 96, 100, 112, 114, 120, 138	195	
YTC280	5.5	20, 22, 23, 25, 27, 29	290	1340X640X680
	7.5	25, 27, 29, 31, 32, 34, 37, 40, 42, 46	330	
	11	31, 41, 44, 47, 48, 51, 55, 60, 64, 69, 71, 74, 80	340	
	15	44, 47, 48, 51, 55, 60, 64, 69, 71, 74, 80	360	
	22	64, 69, 74, 80	410	

注: 需要特殊性能、规格、转速等可另行商议。